



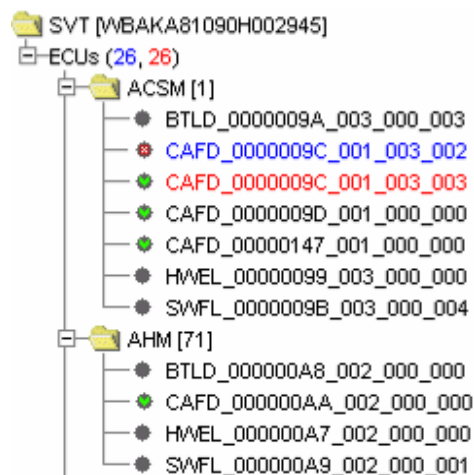
E-SYS "EDITORS AND VIEWERS" TAB



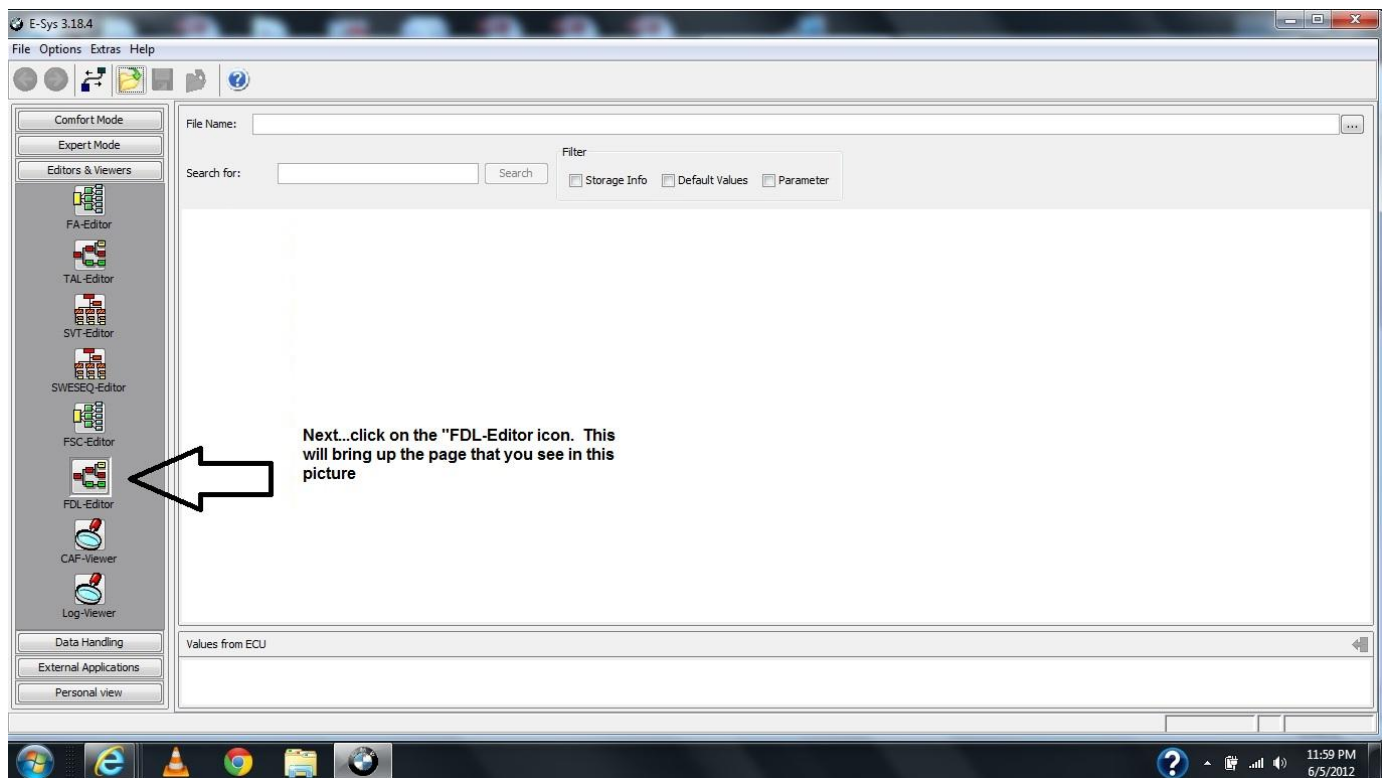
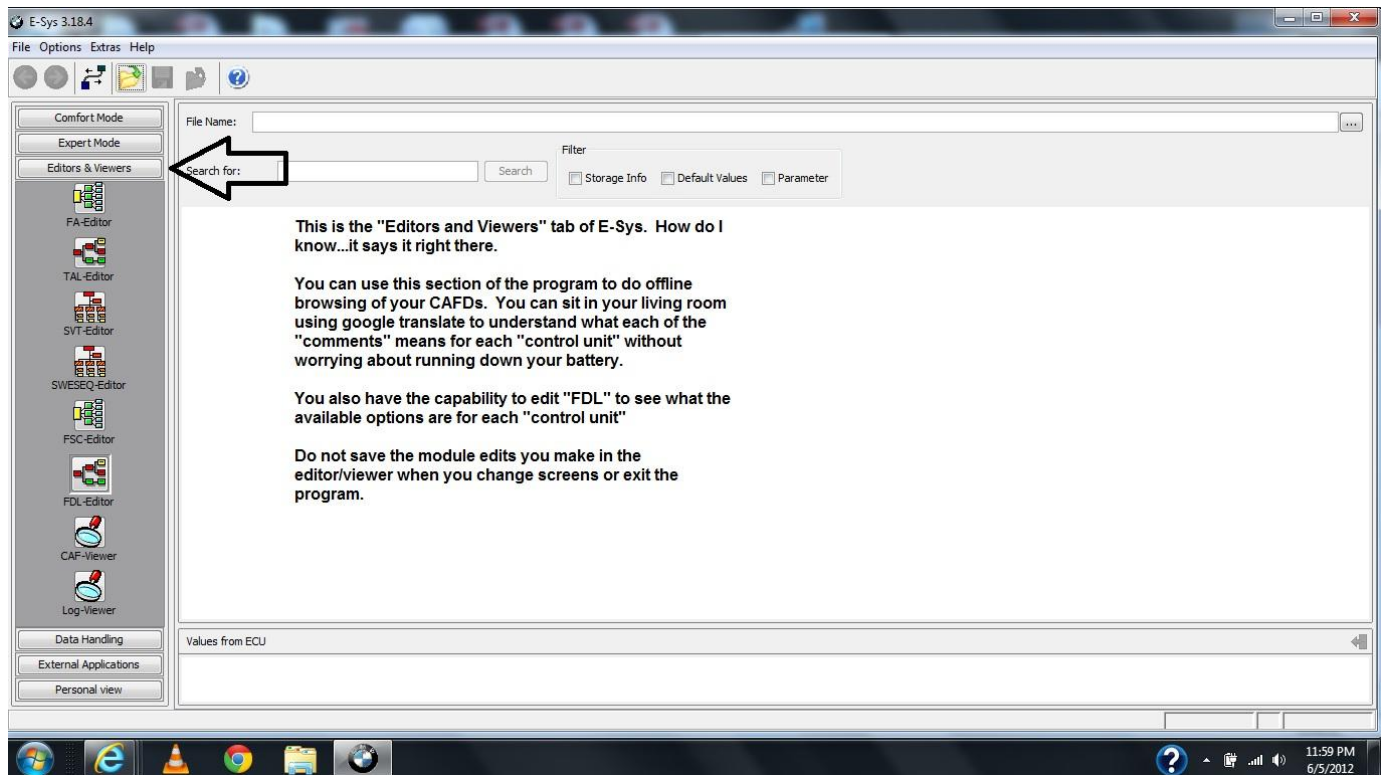
FDL-EDITOR

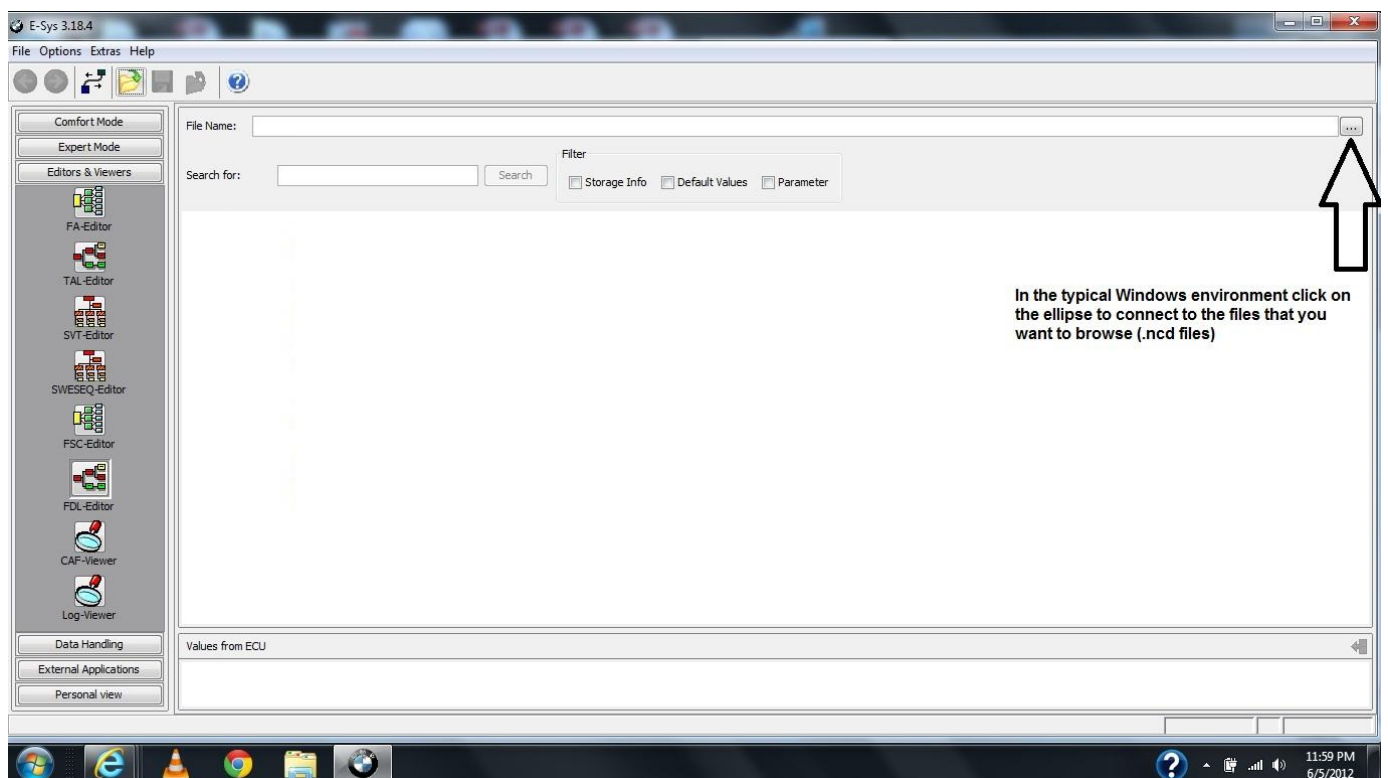
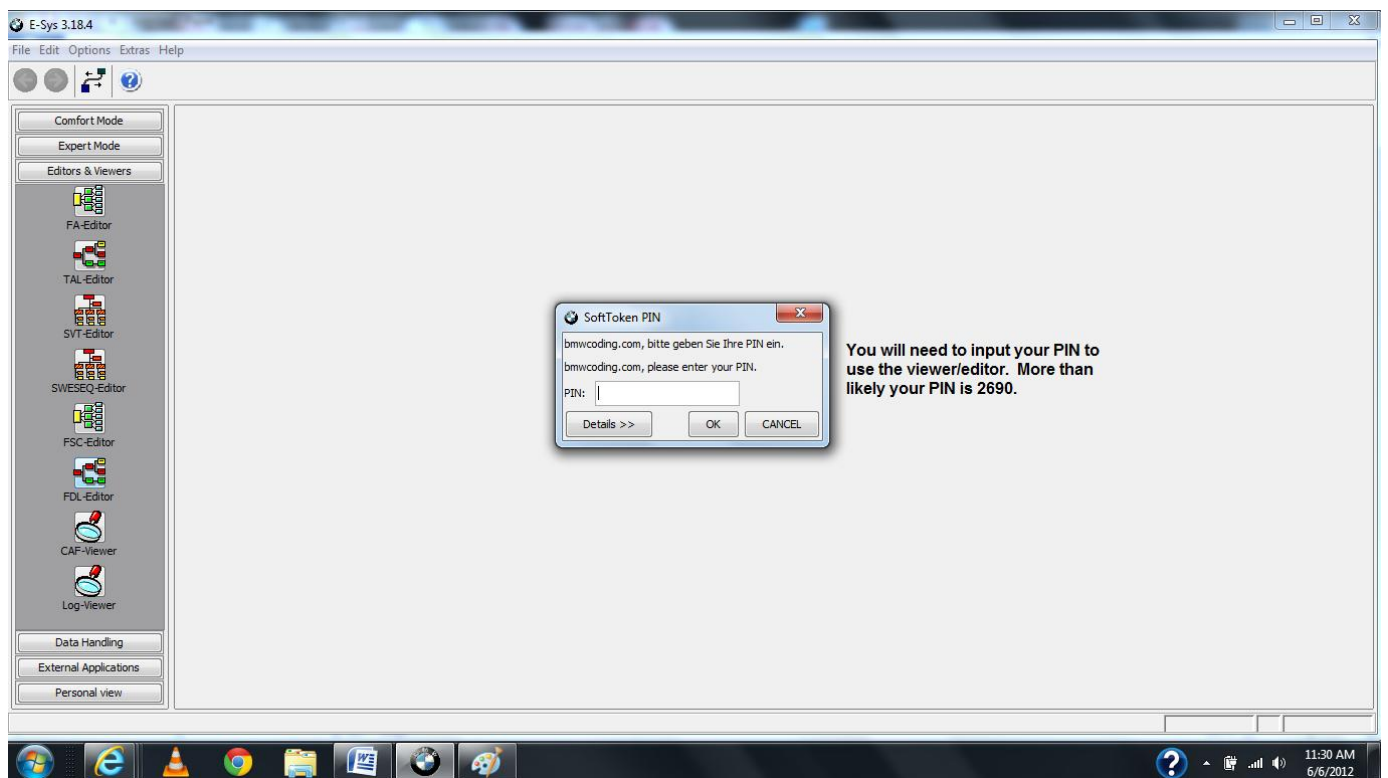
Software Variant Table Tree (SVT)

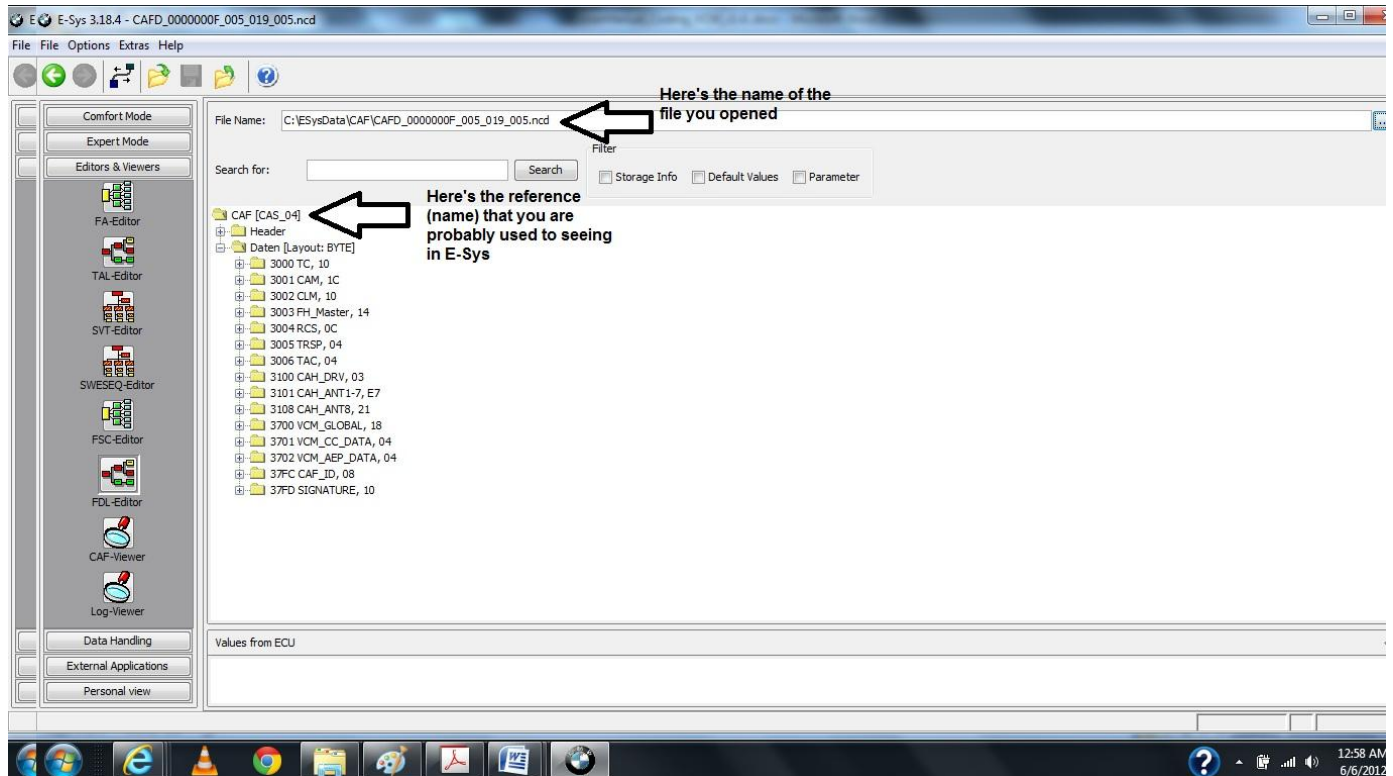
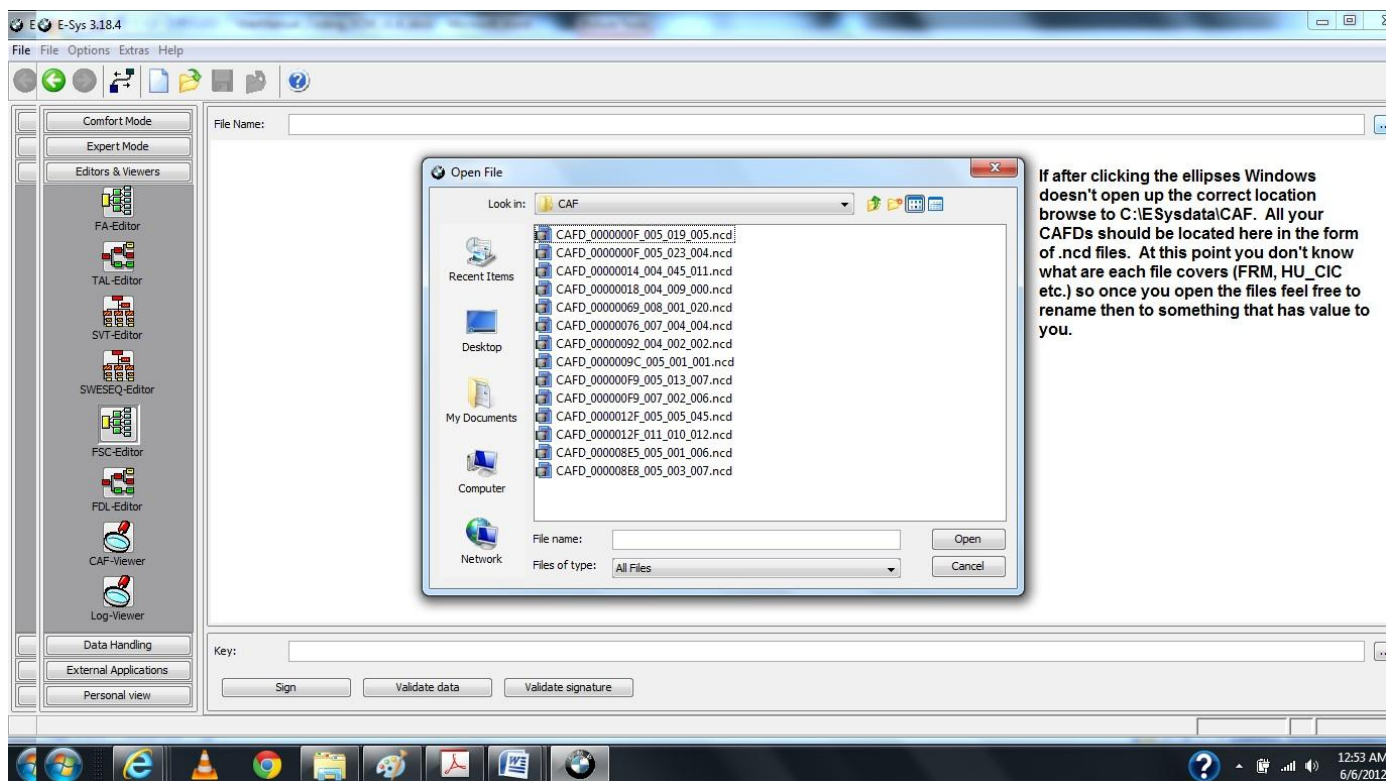
Below is a picture of the SVT tree. If you're interested in this type of guide you more than likely know how to get to this point. The CAFD that are marked with a green check mark are your active units and the coding data can be read. Whenever you read the coding data (right click "Read Coding Data") a copy of this CAFD is saved in C:\ESysdata\CAF. Just know that each time you "Read Coding Data" it overwrites the copy that was saved previously. When you get your car back from having an update done (i.e. Global Update) you should read all the CAFDs for your vehicle. This will save the baseline (.ncd files) of your vehicle in C:\ESysdata\CAF. Now move a copy of all the .ncd files to a location that is safe. If you should manage to damage the SVT in your car, you can use these files to rewrite the CAFD to its original condition.

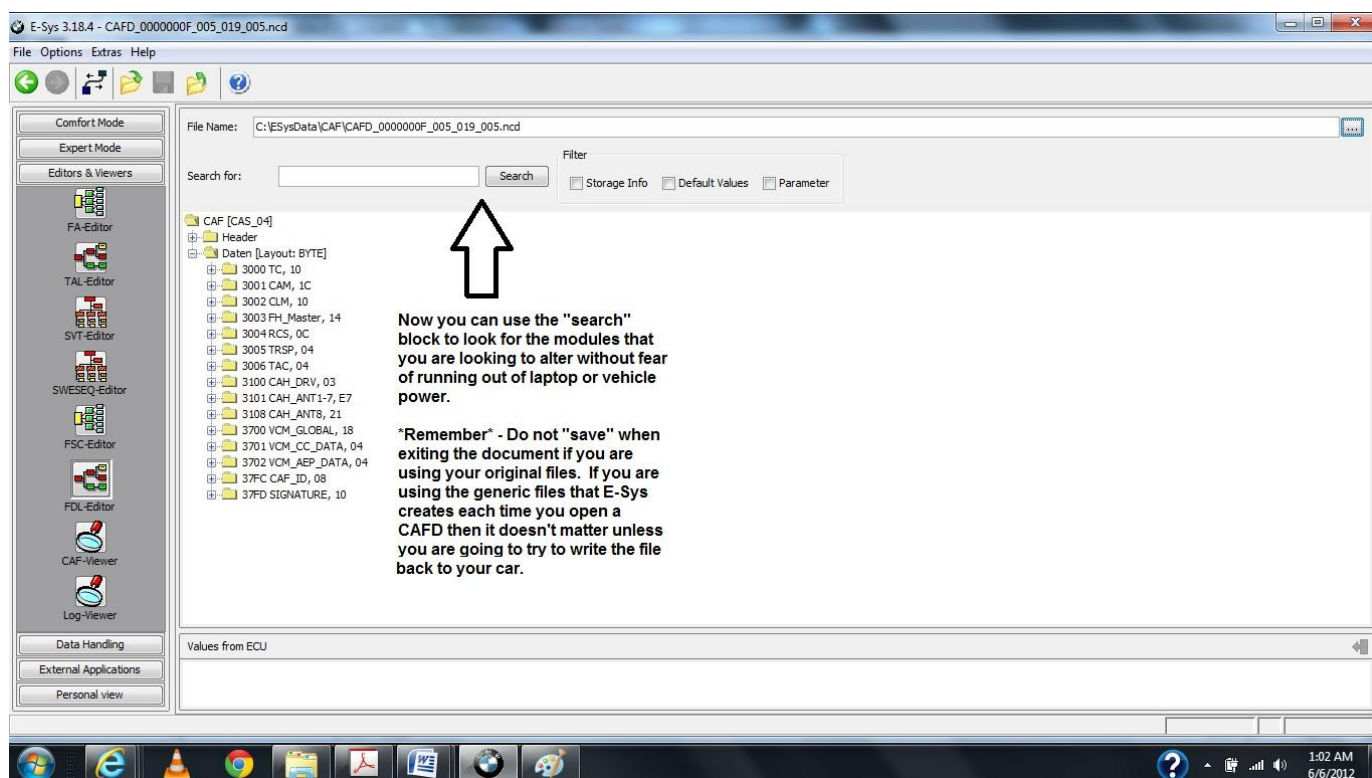


So now you have copies of all your .ncd files and are wondering what you can do with them. Well for a start you can use them to browse the SVT directory tree of your car while not physically connected to it. Your next question is how? Hold on to your hats...here we go.







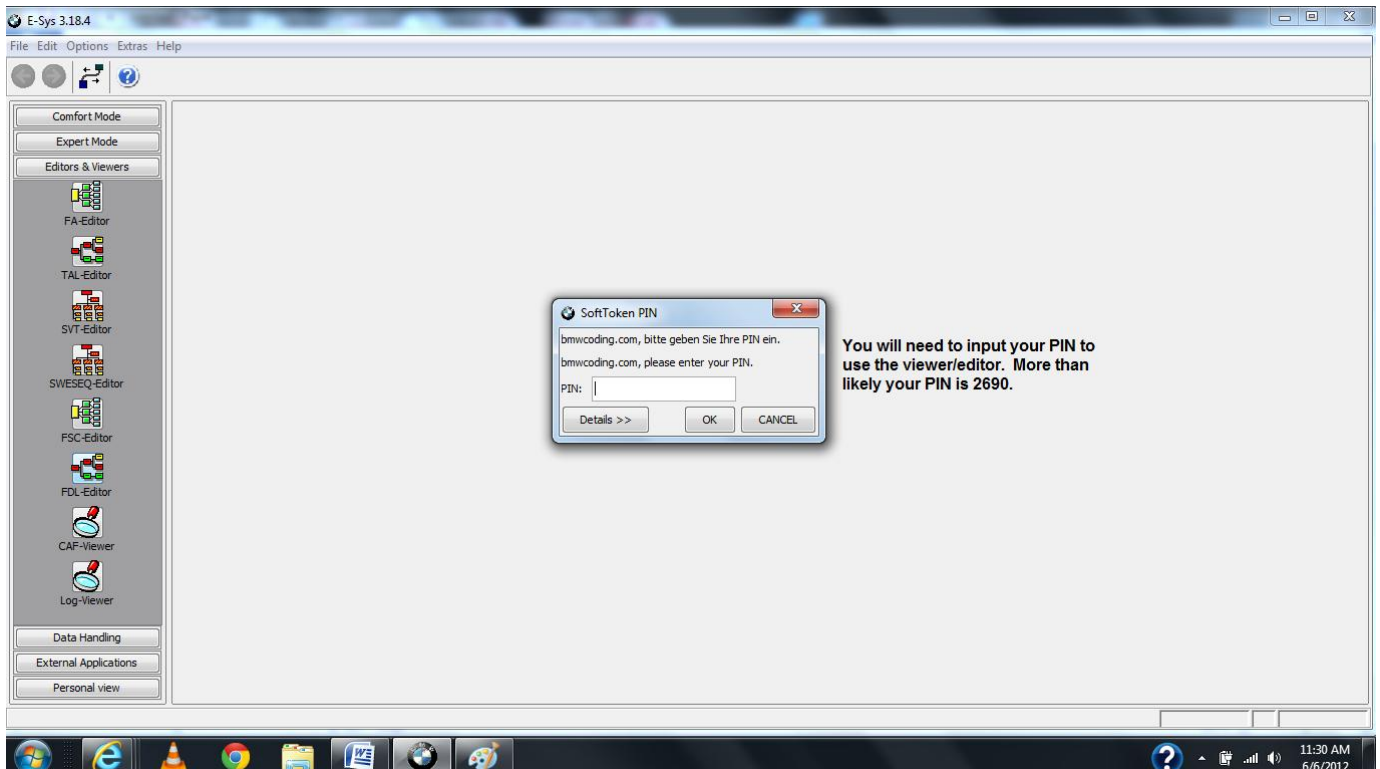
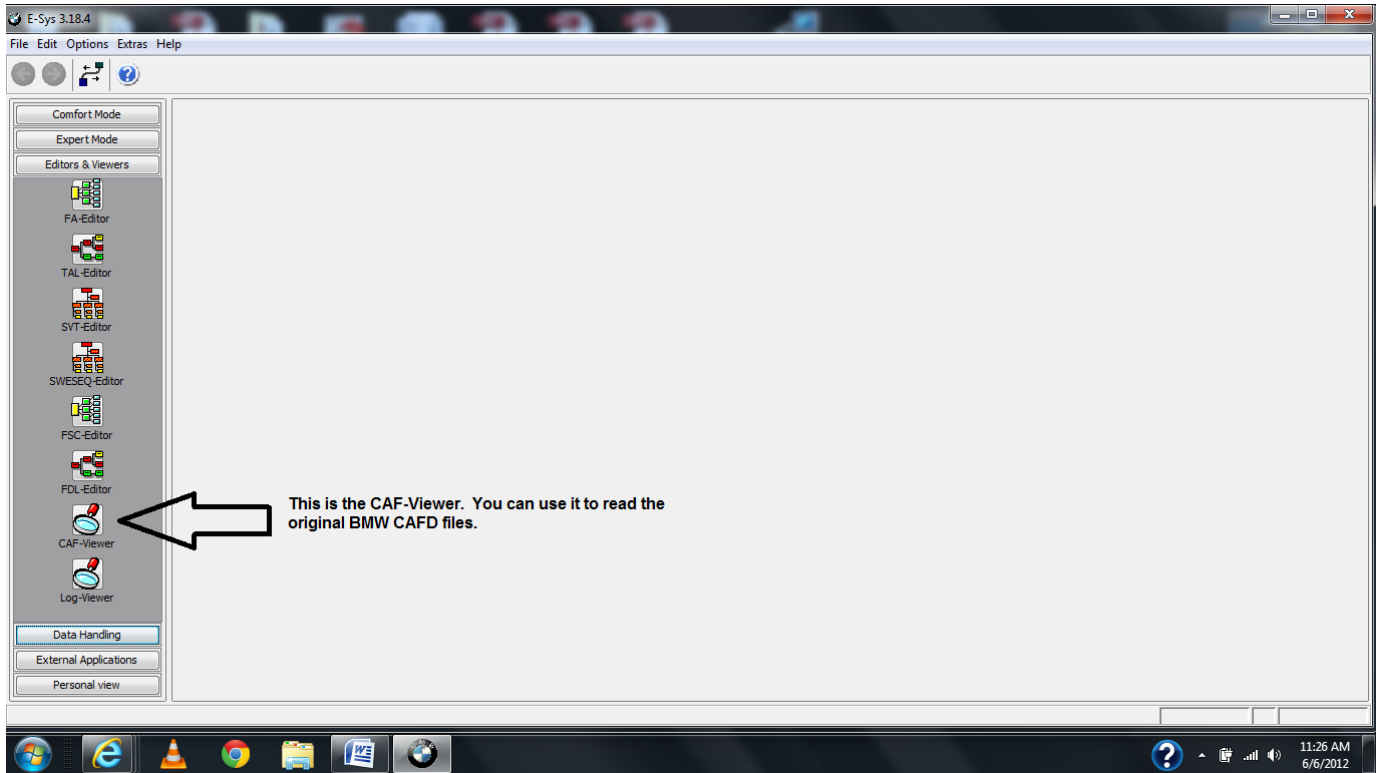


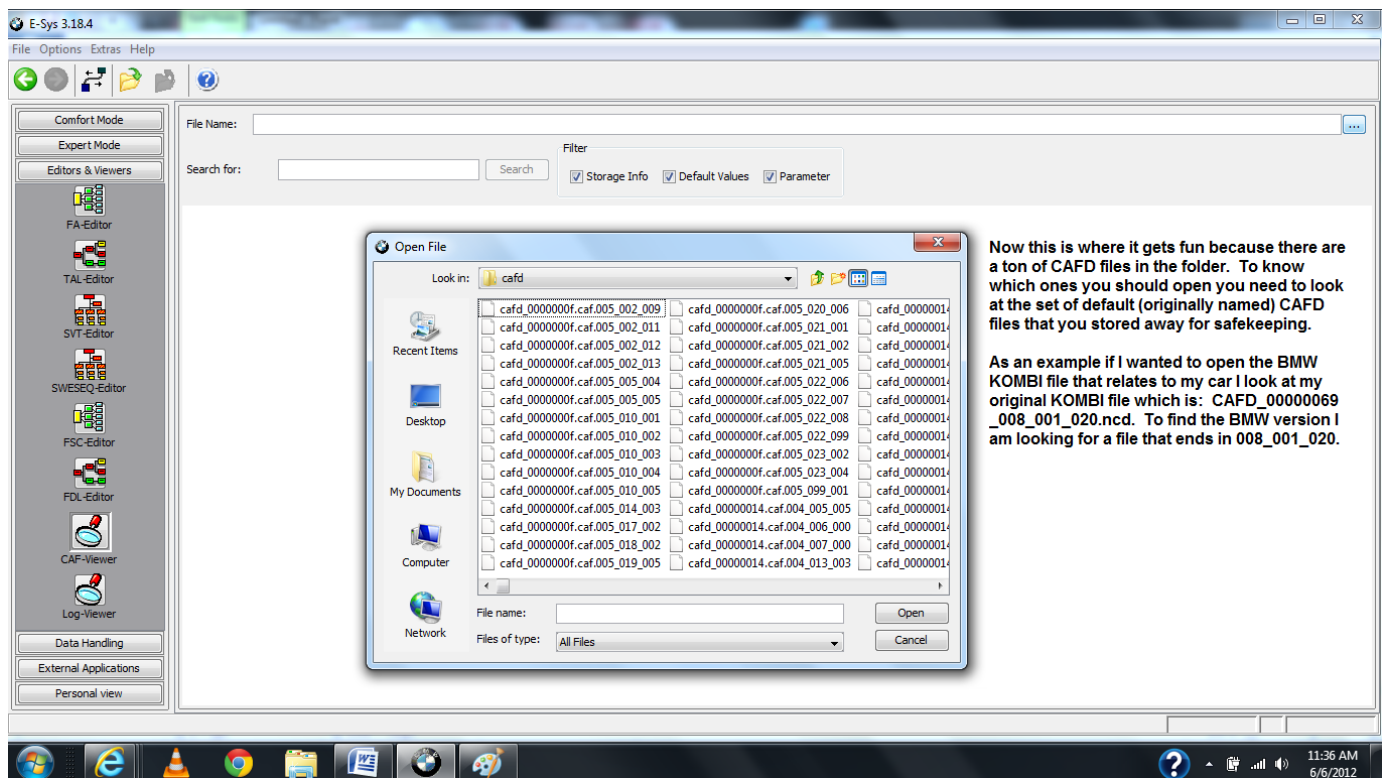
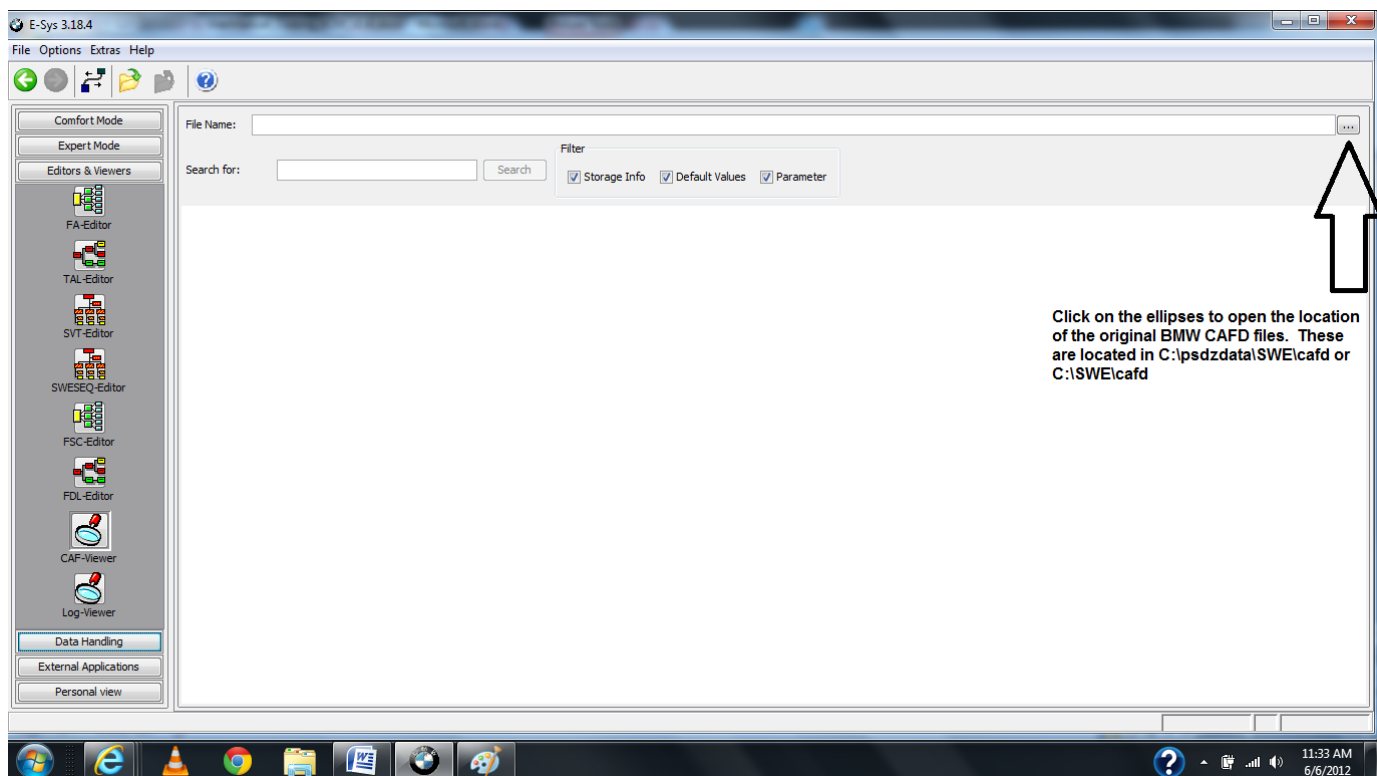
That's pretty much that as it relates to the "FDL-Editor." Feel free to explore and see what you can find.

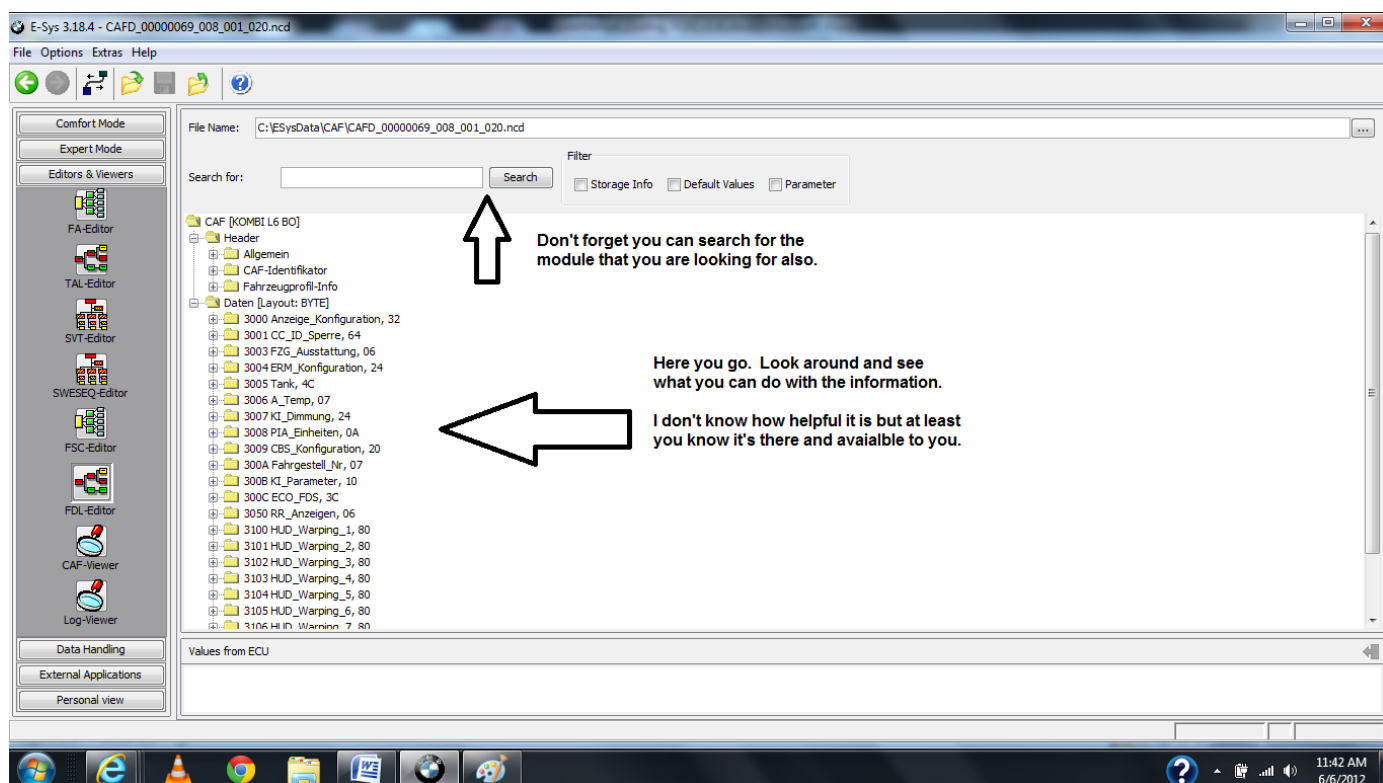
CAF VIEWER

Next is the CAF-Viewer, which is obviously one icon down from the FDL-Editor.

The CAF-Viewer will allow you to look at all the available modules and codes sitting in the original BMW CAFD files (located in C:\psdzdata\SWE\cafd or C:\SWE\cafd).







That's pretty much it for this round.